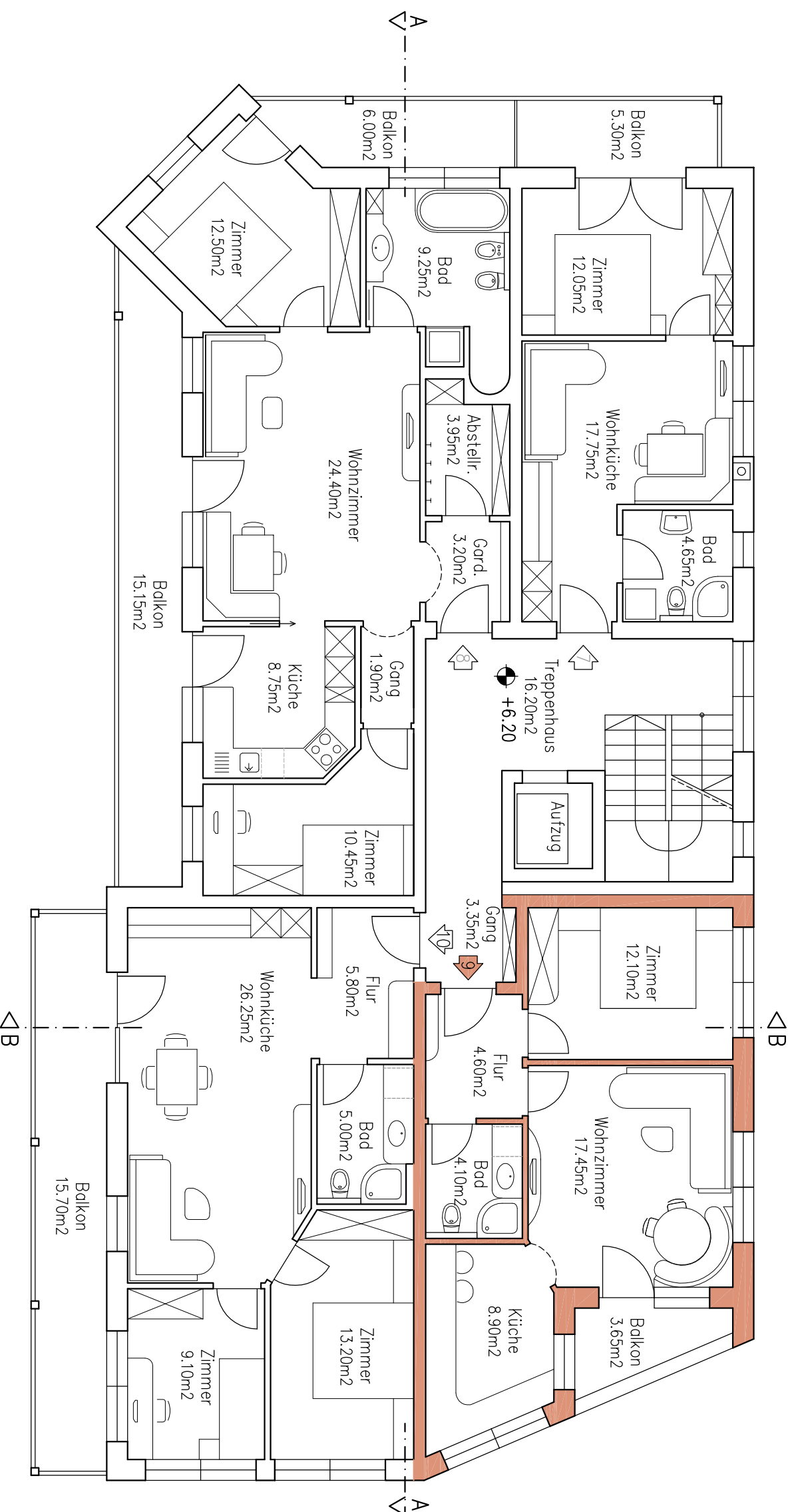




# 2. STOCK

1:100



Nettowoohnfläche-Bruttofläche Wohnungen:

Wohnung  = 44,40m<sup>2</sup> / 44,30m<sup>2</sup>  
 Wohnung  = 65,40m<sup>2</sup> / 92,80m<sup>2</sup>

Wohnung  = 47,45m<sup>2</sup> / 59,85m<sup>2</sup>  
 Wohnung  = 59,60m<sup>2</sup> / 72,30m<sup>2</sup>