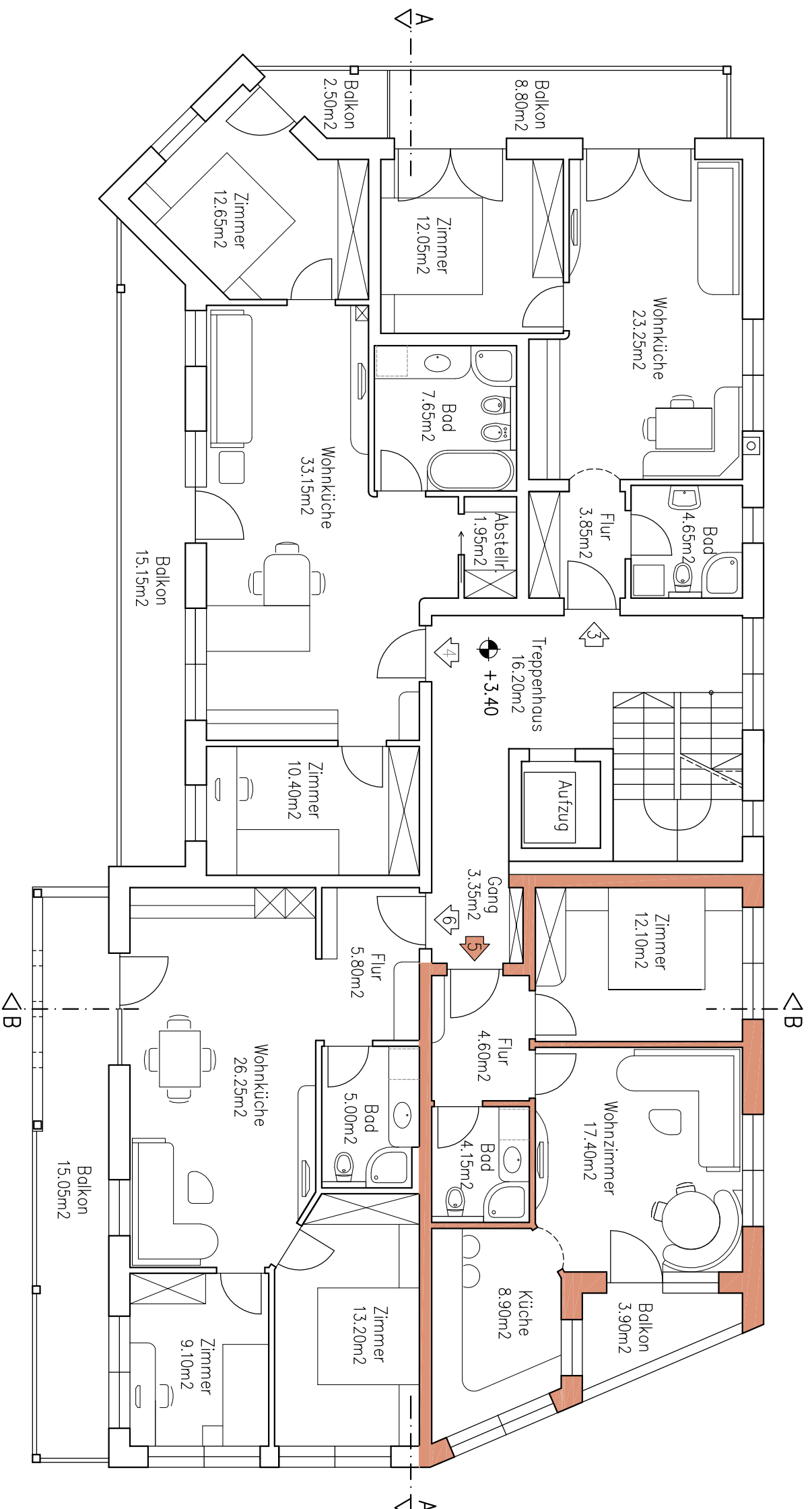





# 1. STOCK

1:100



Nettowohnfläche-Bruttofläche Wohnungen:

Wohnung  = 43,80m<sup>2</sup> / 55,80m<sup>2</sup>  
 Wohnung  = 65,80m<sup>2</sup> / 81,30m<sup>2</sup>

Wohnung  = 47,15m<sup>2</sup> / 59,85m<sup>2</sup>  
 Wohnung  = 59,35m<sup>2</sup> / 72,30m<sup>2</sup>